

# WHAT'S ON NEXT WEEK

## IN HORIZON PCN

### **Get Together @ The Green**

**Monday 29th July**

A social drop in for individuals with learning disabilities, autism and mental health needs.

**The Green Community  
Cafe on Clarence Park,  
Walmersley Road, BL9 6LL.  
11am - 1pm**

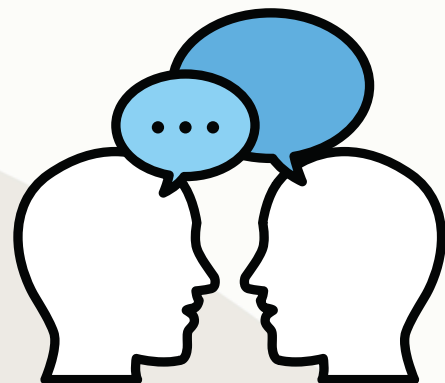


### **Social Prescribing at Bolton Road Methodist Church**

**Thursday 1st August**

Pop in and have a brew and a chat with your Social Prescriber. Get to know others and find out what's available in your community.

**Bolton Road Methodist  
Church, BL8 2NZ.  
09.30 - 12pm.**



**For more information, please contact  
Demi on 07713 750459 or email  
[nwch.socialprescribing@nhs.net](mailto:nwch.socialprescribing@nhs.net)**